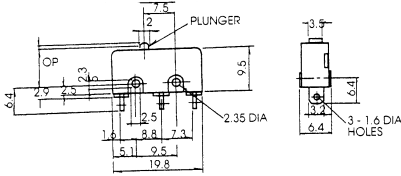


SWITCHES SUB-MINIATURE & MINIATURE SNAP ACTION

SUB-MINIATURE SNAP ACTION SWITCH with LONG LEVER

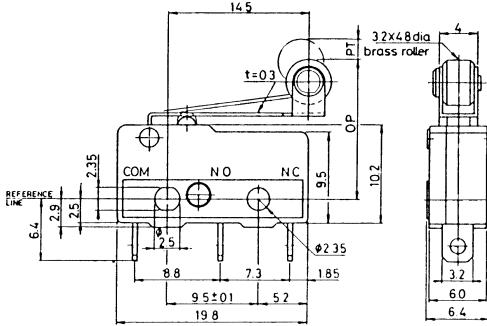


SPECIFICATIONS:

Current Rating:	5A @ 125V AC, 3A @ 250V AC
Initial Contact Resistance:	Under 30 Meg ohm
Insulation Resistance:	100 Meg ohm (Min.) at 500 VDC
Dielectric Strength:	1000V AC 50-60 Hz
Service Life:	Mechanically 30,000,000 Electrically 100,000
Terminal Type:	Solder

Part No.	Type	Action	Actuator
30-18222	SPDT	Snap Action Momentary	Long Lever

SUB-MINIATURE SNAP ACTION SWITCH with ROLLER LEVER



SPECIFICATIONS:

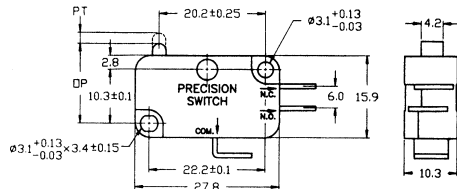
Current Rating:	5A @ 125V AC, 3A @ 250V AC
Initial Contact Resistance:	15 Meg ohm (Max.)
Insulation Resistance:	500V DC 1000 Meg ohm (Min.)
Dielectric Strength:	1000V AC for 1 Minute
Contact Material:	Silver
Terminal Material:	Brass - Silver Plate
Terminal Type:	Solder

Part No.	Type	Action	Actuator
30-2505	SPDT	Snap Action Momentary	Roller Lever

SPECIFICATIONS:

Terminal: Solder	OT Min.: 1.4mm
OF Max.: 45g	MD Max.: 0.8mm
RF Min.: 12g	FP Max.: 17.6mm
PT Max.: 2.8mm	OP: 14.5 ± 0.8mm

MINIATURE SNAP ACTION SWITCHES with PIN PLUNGER



SPECIFICATIONS:

Current Rating:	16A @ 125V/250V AC
Initial Contact Resistance:	15 Meg ohm (Max.)
Insulation Resistance:	500V DC 1000 Meg ohm (Min.)
Dielectric Strength:	1000V AC for 1 Minute
Contact Material:	Silver
Terminal Material:	Brass - Silver Plate
Terminal Type:	.187" Quick Connect

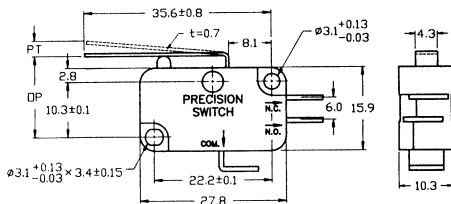
Part No.	Type	Action	Actuator
30-2000	SPDT	Snap Action Momentary	Pin Plunger
30-18230*	SPDT	Snap Action Momentary	Pin Plunger

* 30-18230 Rated 10A @ 125V/250VAC with .250" Quick Connect Terminal

SPECIFICATIONS:

Terminal: Quick Connect	OT Min.: 0.8mm
OF Max.: 230g	MD Max.: 0.15-0.4mm
RF Min.: 56g	OP: 14.7 ± 0.4mm
PT Max.: 1.2mm	

MINIATURE SNAP ACTION SWITCH WITH SHORT LEVER



SPECIFICATIONS:

Current Rating:	16A @ 125/250V AC
Initial Contact Resistance:	15 Meg ohm (Max.)
Insulation Resistance:	500V DC 1000 Meg ohm (Min.)
Dielectric Strength:	1000V AC for 1 Minute
Contact Material:	Silver
Terminal Material:	Brass - Silver Plate
Terminal Type:	.187" Quick Connect

Part No.	Type	Action	Actuator
30-2020	SPDT	Snap Action Momentary	Lever

SPECIFICATIONS:

Terminal: Quick Connect	OT Min.: 1.6mm
OF Max.: 115g	MD Max.: 1.2mm
RF Min.: 14g	OP: 15.2 ± 1.2mm
PT Max.: 3.3mm	